



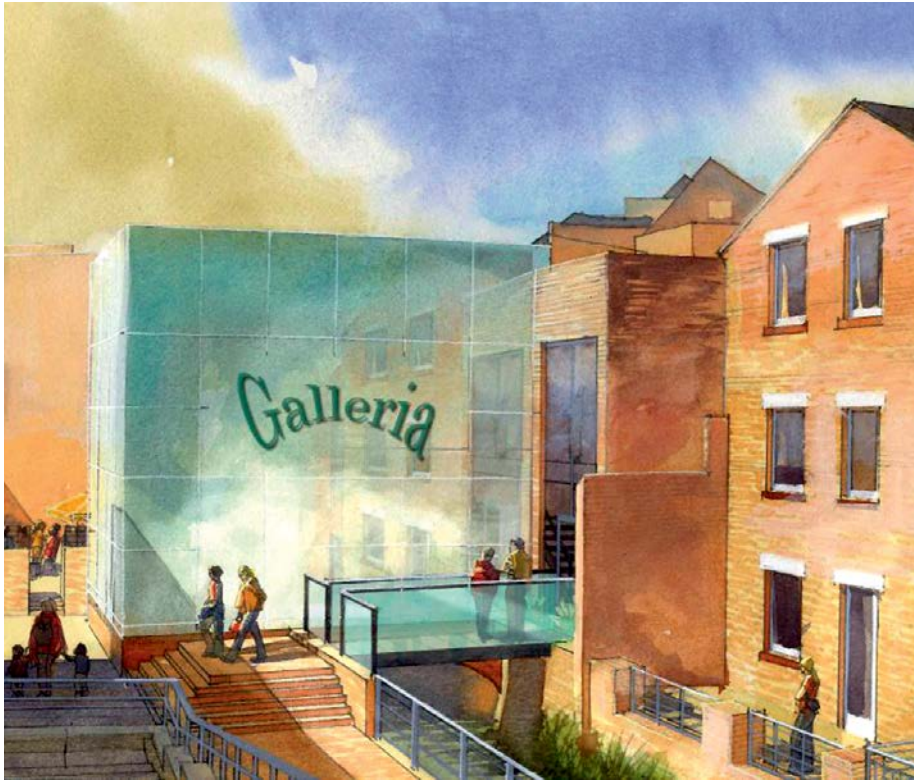
## Retail

### Gun Street Conversion

In central Reading DA have assisted Owens Galliver Architects on two adjacent Listed Building retail conversion schemes beside The Holybrook, a chalk stream feeding into the Kennet & Avon Canal.

New public footbridge links with terraced native & marginal gabilon planting have been requested by The Environment Agency.

DA is working on conversion and refurbishment schemes at Pangbourne and Reigate and a new retail site at Chobham

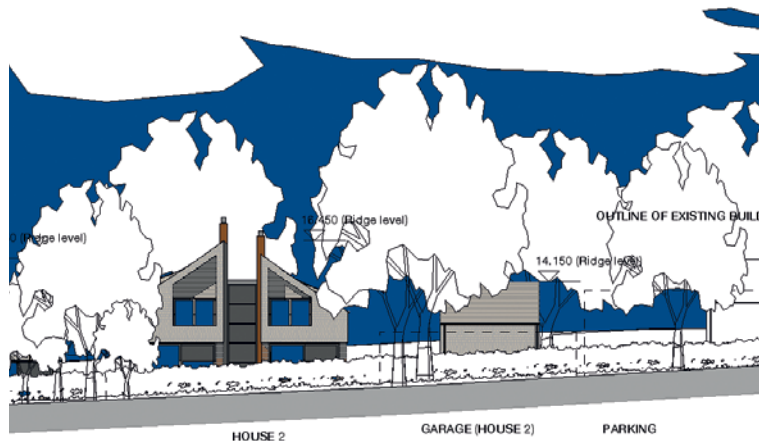


## National Park

### East Sussex Enterprise

At Plumpton village East Sussex DA is working on a conversion scheme that includes the replacement of light industrial use with mixed residential and holiday let accommodation. The site lies within the South Downs National Park and is visible from the South Downs Way.

With considered tree protection, a replanted landscape setting and contemporary architecture using local materials the detailed proposal has received strong local support. A detailed application has now been made to Lewes DC with Koru Architects guided by Prospective Planning.



## Services

- Landscape Planning Advice
- Pre-application reports/surveys
- Landscape and Visual Impact Assessment
- Winning Appeals – expert witness/ written rep
- Detailed Planning Reports
- Landscape masterplanning/project management
- Refurbishment/ Conversion schemes / Estate management
- Arboricultural Method Statements
- Ecological Reports – protected species surveys
- 3D CAD Visualisation/ Photomontage/BIM
- Flood risk improvements/ enhancement
- Private garden design

### Contact

Adrian Draffin  
(Wokingham Office)  
Tel: 01344 750011  
Mob: 07561 445633  
Email: [info@draffinassoc.co.uk](mailto:info@draffinassoc.co.uk)  
[www.draffinassoc.co.uk](http://www.draffinassoc.co.uk)

## Healthcare

### Hillbrow

A new £5m extension has been completed at Hillbrow, a private healthcare home at Farnham. DA's landscape scheme includes open lawn, courtyards, water features, special sitting and meeting areas within managed wooded surroundings. Residents and their guests will have a sequence of outdoor spaces to explore and enjoy with seasonal and wildlife interest. The scheme has tremendous support from the local health and community groups.



## Leisure

### Camberley Town FC

Camberley Town Football Club's development plan includes the provision of a new stadium and clubhouse. Additional grass and floodlit all weather facilities for local schools and clubs are also provided. The new ground facilities will include extra match day parking within enhanced local parkland.

The landscape masterplan includes the protection of woodland screens and badger habitat. Light pollution will be minimised within the floodlit provision. Further similar projects are planned as part of the current Localism Initiative supported by The Football Foundation Charity.



## Residential

### Netherby Gardens

DA have completed another successful development for T A Fisher in Bracknell including retained woodland in a managed landscape setting. DA have also been working with the same client on a Listed Farmhouse conversion/ residential development locally and at Newbury on mixed development.



**DRAFFIN  
ASSOCIATES**

Our aim is to address the landscape constraints, exploit the design opportunities and produce commercially successful, sustainable and attractive results.

#### **Draffin Associates Ltd.**

The Studio, Glenrise, Lower Wokingham Road,  
Crowthorne Berkshire RG45 6DB

Tel **01344 750011**

Mob **07561 445633**

Email **info@draffinassoc.co.uk**

**www.draffinassoc.co.uk**

### Forthcoming Projects

- Independent school development programmes in Buckinghamshire and Berkshire
- Industrial Estate refurbishment in Hampshire
- Environmental improvements at University of Surrey
- Private house and garden in Berkshire